



## PEOPLE'S LOTTERY

I would like to thank all the *Friends* for the part they played in our participation in the People's Lottery on ITV. As you know, we were short listed and went head to head against a group in Leicester, and we were unfortunate to come second!

A big thank you goes to Sue for coming up with the idea of outdoor keep fit equipment for adults after hearing about a similar venture in Manchester which is very popular with the older generation there.

*Friends* realised the potential this equipment would have to improve the Park's facilities so we went ahead with the idea. We formed a sub-committee comprising of Sue, who was very brave speaking on TV, supported of course by Kris. They did very well and a big thank you goes to both of them. Then we had Mary Morgan and John Youngs who did excellent work in their own field. There is another thank you to ALL of the *Friends* who helped make this project such a success. Last, but not least a big thank you to Keith and the Rangers for adding their support. My thesaurus does not come up with another word for thanks, so you will have to bare with me!!

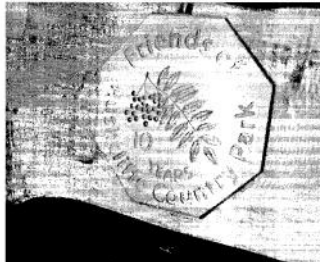
*Dorothy Pearson*

## Celebratory Bench

We have a wonderful new bench installed to celebrate our 10th anniversary.

I would like to thank Roger and his helpers, especially Gordon, for designing and constructing the bench and a big "Thank You" to John Randall for designing and carving a magnificent plaque incorporating *The Friends* logo which was set into the backrest of the bench. Thanks to Dave Singh of DNS who donated the York stone used on the floor area around the bench. A 12 foot rowan tree, which forms part of our logo, was planted next to the bench and on a beautiful sunny morning the *Friends* drank a toast to the next ten years! (Another photo inside)

*Jean Gray*



## 10 Year Plaque



## In Memory of Eddie

Ivy Barber was joined by *The Friends* on a beautiful sunny day when she planted a Cherry tree in memory of her husband Eddie in the Community Garden.

We felt it was an appropriate place to be alongside the mosaics on which Eddie had worked.

# Work Update

The last three months has seen much work swing into action and much achieved.

We have gone from coppicing our own hazel & willow for stakes & binders through to our yearly favourite, hedgelaying itself.

Alistair Cuthill has carried out the second phase of felling the sycamores on the A60 Boundary hedge line, then with Jonathan Silgram laid a section of the A60 hedgerow and rejuvenated another, the old hawthorn hedge inside Millfield. The cleared areas are now ready and waiting for the right weather to replant with a triple hedgerow, 94 trees, and understorey plants. Alistair will be back early January to fell the remaining 6 sycamores and this area will then be planted with 22 trees.

Bluebell bulbs a many have been planted



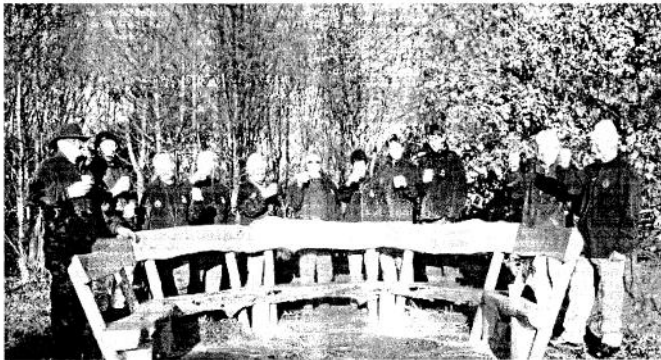
with fingers crossed!!

A new welcome sign 'Silhouettes' courtesy of Roger, enhances the entrance to the Park.



The first interactive piece for the Foyer, a giant sized jigsaw with many solutions, proves very popular.

Roger, with a little help from his friends, designed & constructed a beautifully made seating area to celebrate the FORCP 10 years.



Topped off with an equally beautiful plaque, (see front page) carved by John Randall, the planting of a special Rowan tree and located looking over the lake, it makes a very special area and a valued tribute to all the hard work and contribution the Friends have and continue to make on and for the Park.

**WELL DONE  
and  
THANK YOU.**

# Wildlife Update



Still more plants and animals are being found. Since the last newsletter the totals lists have reached a staggering 1019 species (to 22.11.08).

Amazingly another bird species was found in Plantation 1 adjacent to Gibbies Wood on 11.11.08 - Long-eared Owl, and on the same day and in the same plantation a new tree species was identified - Ailanthus or Tree Of Heaven.



One of our newest members, Bill Young, brought me a drawing of a type of Ragwort which he had seen growing near the Seasonal Pond during August. The drawing was so good that identification was easy - Hoary Ragwort. This was added to the list on 05.11.08.

A report from Alan Semper, a member of a local Nature Group, told me of a 14-spot Ladybird (new species) and also pointed out that our mammals list did not have one of our more common species recorded - Grey Squirrel. Oops! Sorry, it has now been added.

Now for some really good news. The Park has recently been awarded S.I.N.C. (Site of interest for Nature Conservation) status by reason of finding a breeding population of the nationally scarce Waved Black moth. Our 4 records so far are only the 2nd - 5th for Nottinghamshire, the first being at Misson in 2002.

Further to this, and in line with the LBAP (Local Biodiversity Action Plan) and a requirement for the Borough to have a number of nature reserves within its boundaries, the Park will apply to obtain Local Nature Reserve status. Members of the Rushcliffe Nature Conservation Strategy Implementation Group and a representative from the Notts. Wildlife Trust seem to be in favour of us applying and at the next meeting on January 20th I will seek approval for adding the Park to the list.

**Mike**

## Swan Update

On Thursday 23rd November the family took off and disappeared. The adults made two brief appearances on the 22nd and 25th but have not been back since.

They were relocated on Blotts Pit at Hoime Pierrepoint - Peter who saw them on Saturday 29th.

It may be that the move is not permanent, but the site is now up for grabs by any pair with no breeding territory so watch this space.

**Mike**

**STOP PRESS:** The two adult Swans returned to the Park today 09.12.08 at 2.00 pm.

## A Third Task Day?

At the last FORCP Meeting a proposal was made to have a Monday as a third task day.

The Staff would not only welcome but appreciate this. It would certainly help us to achieve more, especially through the busy times.

The matter will be discussed and voted on at the next meeting in January and if agreed the starting date would be Monday 12th January 2009.



*The Staff would like to wish everyone a Merry Christmas and a Happy New Year  
Here's to another 10 years - Cheers!!*



# Rushcliffe Country Park

## WORK DAYS

Unless otherwise stated, all volunteer events are free and open to members of FORCP and non-members

The Friends' Work Days will be held every **Wednesday and Saturday** from  
**Wednesday 7th January 2009 - Saturday 28th March 2009**

New Volunteers and Members always welcome. See tasks below.


### Notable Dates

FORCP Meeting - Wed 7th January 2009 - 1.30pm RCP

10k Run - Sun 8th March 2009

FORCP AGM - Wed 11th March 2009 - 2.00pm

### Tasks

 Every Sunday morning weather permitting the South Notts Ringing Group are in from about 7-30am -12-30am through until the end of March 2009



Create some new benches for the Park from the felled Sycamore trees



Hedgelaying & Tree & Hedge Planting



Recycle the felled Sycamore trees to replace the Snake, Lizard, Trim Trail and Log Maze

Construct Bays to hold woodchips



*This symbol denotes the activity is working towards the Notts Biodiversity Action Plan.*

Meet at the Rangers' Office at 9.30 am.

Unless stated all events run from 10.00 am - 3.30 pm.

**Don't forget some lunch, sturdy boots and waterproofs.**

For more information contact the Rangers' Office **0115 921 5865.**

Produced by the Friends of Rushcliffe Country Park  
Registered Charity No 1079665



Supported by



An independent group associated with  
BICV  
a registered charity