

Spring 2008



Issue 39

## Eventful and Successful Year

It is one year since I took over the Chairmanship of the *Friends* and I would like to give you my report on that eventful year.

The ongoing tasks are varied. There is wood chipping the paths, the ladies who do teas and coffees, coppicing, riveting, wood chipping the paths, weeding, teak oiling the wooden structures, wood chipping the paths, planting wild flowers, etc. etc. The jobs are too numerous to mention but one that is clearly in my mind is wood chipping the paths. Who needs to go to a gym when we have our own "green" one at Rushcliffe?? Repair work is vital. The log maze and willow structures are both well used and enjoyed by many so need regular attention.

One of the most enjoyable aspects is beginning new tasks and this year we have had many.

A new fence has been put up reminding dog owners where leads need to be on and we have planted numerous trees along that boundary.

A favourite task is hedge laying and this year was no exception as there are always many eager volunteers for this job.

We have spent some considerable time on the Natural Heritage Project, which is now completed, and to celebrate we had a walk, looking at the work we had done for the grant, which we followed with a hog roast.

We have made a new path into Gibbies Wood from just over the railway bridge and this is proving to be very popular, with two magnificent archways to show the way.

We had a family day this year, which was not as well attended as we had hoped. We put in a lot of preparation work and the day was hot and sunny. We did get quite a bit of work done and the families that came to help were very enthusiastic and enjoyed the time spent with us.

We have a new pond dipping area with carved benches and frog boxes, along with a larger pond. This will come into its own this coming year with school and club visits.

We made a spectacular willow fence around the turbines, ably helped by a very enthusiastic local group.

The Community Garden has been given a make-over. We were given a generous donation by a benefactor for that purpose, so we have new raised beds which will be planted later in the Spring, and also a carved hedgehog bench. A tree called *Sorbus aria* - *Majestica* - white beam was planted in the centre of the circular seat and should look splendid as it matures.

Many "Welcome to Rushcliffe Country Park" signs were carved under the guidance of John Randall and they look superb. These are made out of recycled material and they are situated around the entrances to the Park.

Buckets were artistically painted for the sensory trail and look very professional.

We now also have our very own website which is excellent and very informative.

We have had two official visits this year, one from a local group at West Bridgford and one from Lincoln. Both groups wanted to know about the *Friends* and what work we did. Needless to say they were very impressed with what we had achieved and the overall high standard at Rushcliffe Country Park including receiving the accolade of the "Green" Flag award.

This year 3,000 man (and of course woman) hours of work were put in by a small, energetic group of people who have made use of their individual skills to form a dedicated, hard working, harmonious team known as the *Friends of Rushcliffe Country Park*.

A brilliant effort by all concerned.

Many thanks to all the *Friends* and the guidance of the Rangers.

Dorothy

## WILDLIFE UPDATE



On Tuesday 4th March X6079 and her mate turned up at the Park yet again. Both were hounded around the lake and were eventually caught by Peter and Mick and taken to Holme Pierrepont for the third time.

Frogspawn has been found in the majority of the ponds around the Park with most being in Gibbies Wood.



Buff-tailed Bumble Bees are starting to come out of hibernation with maximum counts on 18th March (3) and 19th March (2).



Lastly, an unusual visitor was found and photographed on 15th March, a white Moorhen. It was not a true albino as it had dark eyes. It had moved on by the 16th as a search failed to find it.

## A HOG ROAST CELEBRATION

On a sunny, but very windy day, January 9th, a group of 30 people set off from the classroom following part of the new Trails to celebrate the completion of The Natural Heritage Project.

We felt very proud of the new information boards along the trail and how well they blended in with the environment.

Walking around Gibbies Wood gave us an opportunity to admire the development of that area. Aided and abetted by Roger and Gordon, Margaret Bingley, aged 93, and the oldest member of The Friends, had fun completing the Maze.



The brisk walk and cold fresh air had given us all an appetite and we were more than ready for the Hog Roast awaiting us back at the classroom.

A DVD was played showing the progress over two and a half years and reminded us of how it looked at the beginning and how much hard work had been done by the various groups involved in making the Natural Heritage Project a success.

A big **THANK YOU** to everyone.

*Jean Gray*

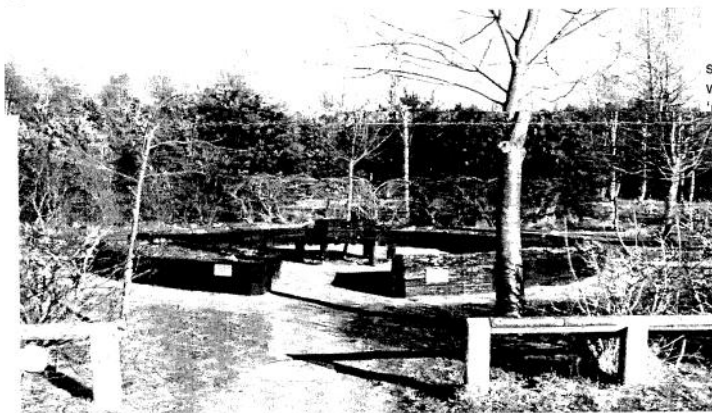


# COMMUNITY GARDEN

A donation of £1105 to be spent on the Community Garden in memory of Anne Norbury enabled The Friends to give a new look to the garden.

The carved seat in the centre of the four raised beds had begun to rot and had been removed.

This gave us the opportunity to install a circular seat with a 12 foot high tree, a Whitebeam, [*sorbus majestica*], in the centre.



Some rotting railway sleepers in the raised beds were replaced with some 'new' sleepers from the Heritage Centre.

These were painted with a black sealant to match the seat and lined to help prevent the beds from drying out.

About 330 plants will be planted in April with a sensory theme.

*Jean Gray*

**Subscriptions for the year 2008 - 2009 are now due** - minimum £2.00. If you wish to continue receiving your quarterly newsletter please fill in the form below and return it, with your payment, to the **Rangers' Office, Rushcliffe Country Park, Mere Way, Ruddington, Nottingham NG11 6JS**

\*Delete as applicable

\*I/We wish to renew \*my/our Subscription to the Friends of Rushcliffe Country Park

Name.....

Address.....

Phone Number.....

E.mail address.....

# Rushcliffe Country Park

## WORK DAYS

Unless otherwise stated, all volunteer events are free and open to members of FORCP and non-members

The Friends Work Days will be held every **Wednesday and Saturday** from  
**Wednesday 2nd April - Sat 28th June 2008**

New Volunteers and Members always welcome. See tasks below.

### Notable Dates

**FORCP Meeting - 14th May 2008 @ 1.30pm RCP**

**6th-9th May 2008 - FORCP Residential Trip to Wytham Woods**

**Mon 12th May 2008 - Environment Agency Team Building Day - Main Task = Installing the new directional signs around the Park. Volunteers free and willing to help out on the day would be very welcome.**


**Sat 7th June 2008 - National Moth Night - Moth trapping at RCP Dusk to Dawn**

### Tasks



Design & create a


W E L C O M E  
Sign

 Prepare the Pond dipping area for the dipping season

 Park Pond check & maintenance

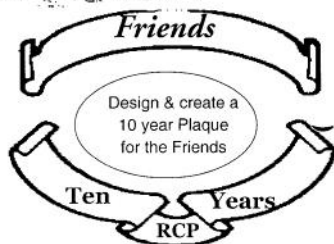
 Pond Surveys

 Early Wildflower Walk

 Flora & Fauna Identification Walks

Plant up the renovated raised beds in the Community Garden

 Barley Straw Sausages



This symbol denotes the activity is working towards the Notts Biodiversity Action Plan.

Meet at the Rangers' Office at 9.30 am.

Unless stated all events run from 10.00 am - 3.30 pm.

**Don't forget some lunch, sturdy boots and waterproofs.**

For more information contact the Rangers' Office **0115 921 5865.**

Produced by the Friends of Rushcliffe Country Park  
Registered Charity No 1079665



Supported by



An independent group associated with  
BTCV  
a registered charity