



## New Friends Logo

The long awaited Friends logo has been finished, and is shown here for the first time on the Newsletter. We hope all the Friends find it agreeable. The Rowan was chosen by the Friends as one of our favourite leaves and we thought its appearance was fitting for the conservation work carried out on the park. Look out for it on future publicity material.

The new T-shirts and fleeces should also sport the new logo.

Many thanks to Barbara Jankowiak, our graphic designer working for the Borough Council, for her invaluable efforts.

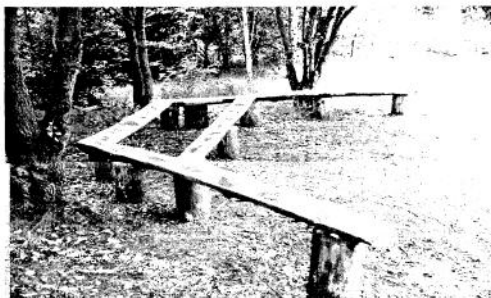
*Roger Byrne*

## The Pond Dipping Glade

The Friends have just put the finishing touches to the new pond dipping area. This resource aimed at schools and organised groups is situated near the lake.

It comprises 12 mini ponds-each 2ft in diameter and 18 inches deep. A log deck beside each pond allows children close and safe access whilst low tables have been installed to provide a surface for collecting trays and study equipment.

Frog and mammal boxes with opening lids also complement the area.



We thank the local scout group for their help in digging some of these ponds.

One part of the glade has been cleared to provide a seating area. Four 12 foot logs supported on stumps have been installed. The Friends have carved these with pond creatures such as frogs and newts and then enhanced these designs by painting them black.

In the centre of this glade the children from Bluecoats School have worked very hard over a full week's activity to dig a large pond 3 metres by 2 metres and 1.4 metres deep. Once dug, a liner was laid on a carpet underlay and the edges landscaped with turf. The fire service was persuaded to come over and fill it with lake water. We hope to give nature every chance

to colonise this area, and to help it along. anyone who has surplus pond life in their garden ponds may check with the Rangers and make a contribution.

*Roger Byrne*

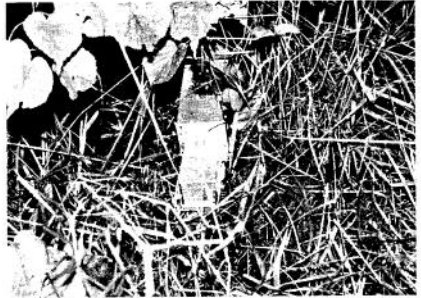


# Mammal Trapping

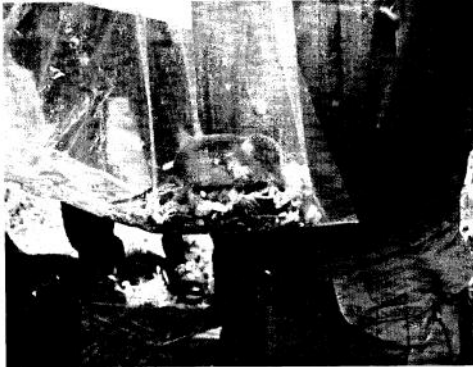
It's 6 am. Attired in long trousers, jackets, hats, latex gloves and citronella on any exposed skin to guard against the 'mossies', Zoe and I are setting off to check 20 traps set the night before in the woodland of the new pond-dipping area. Because the weather has been warm and wet it's quite humid and reminds me of being in the rainforest.

We are carrying out a survey of small mammals on the Park and is part of the Natural Heritage Project. It's the first time I have experienced mammal trapping and I'm feeling excited, but slightly nervous as to how I will cope with being 'Zoe's assistant'!

The traps have been baited with hay, apple, corn and castors. Each trap is approached with great expectancy. Is it still set or is the door closed? Great delight when the door is closed. We have a catch! The same routine is followed with each trap. It's like being in an operating theatre laying out the instruments. Two plastic bags, calipers for measuring length, spring balance for weighing, round ended scissors for clipping fur, recording sheet. Everything is done carefully, quickly, and quietly.



A LONGWORTH TRAP THAT HAS A CAPTURE INSIDE



IDENTIFYING A SHREW

We then transfer the animal to a plastic bag, making sure there are no escape holes, and identify animal.

Animal is taken out of bag if Zoe can get hold of it. She usually does. [Some are very feisty, especially the wood mice]. We sex it, measure, weigh and clip the fur then release it. If we catch a pregnant or lactating female it is released straight away.



BANK VOLE

The trap is baited, set, and placed back in exactly the same position as before, well hidden in the undergrowth. The traps are checked every four hours during the day.

The survey was carried out for three days, I only helped for two, with the following results:

Wood mice	17 new	3 recaptures
Bank voles	20 new	6 recaptures
Common Shrew	1 new	1 recapture

*Jean Gray*

# Hot! Hot! Hot!

Family Conservation Day  
Gibbies Wood  
Saturday 11th August

Despite scorching temperatures in Gibbies Wood a good time was had by all the 'Friends' and visiting families.

One part of Dorothy's advertising campaign of putting up posters could almost become an Olympic event! Her speed at running around the park, leaping out of the buggy and accuracy with the staple gun was something to behold, well done and thank you.



Fantastic to have Gordon's support and seeing him coping so well with his new routine.

The most popular activity was giving the snake and lizard a 'new skin'. The smaller children were delighted to watch deciding which shall I paint first a leg, the head or the tail! One small boy aged about 4 with a broken arm, with great determination, enjoyed himself painting the lizard head. The log maze, always a favourite with the children, turned into a 'day at the seaside' the children with spades filling buckets with bark and parents spreading it in the pathways.

As a new member of the 'friends' (for 18 months now) may I thank the team and rangers for teaching me new skills and for all the fun and laughter on every volunteer day.

Same again next year?

*Jill Spafford*



## Pond Survey

On August 8th the Group carried out a Wildlife Survey of the ponds around the Park. As the Seasonal Pond has astounded us all by retaining water it was an obvious target, along with Gibbies Wood Pond, the Dragonfly Pond and the (new) small dipping ponds.

Nine species were found in the Seasonal Pond with mosquito larvae being numbered in the 100's. 20+ Smooth Newt, 30 Mayfly Nymphs, 31 Damselfly Nymphs and 150 Greater Water Boatmen were the most numerous.

Four species were found in Gibbies Pond, Pond Skater, Water Flea, Greater Water Boatman and Pond Snail.

The new small dipping ponds came out with the top score, (as they should with the water used to fill them coming from the Lake) of eleven species including very small Carp Fry. The other ten species are Hoglouse, Flatworm, Ramshorn Snail, Tubifex (Red) Worms, Mayfly Nymph, Mosquito Larvae, Greater and Lesser Water Boatman, Water Flea and Whirligig Beetle.

Due to the fact that the Dragonfly Pond was covered by duckweed, only 3 species were found there, Ramshorn Snail, Water Worm and Lesser Water Boatman.

## FORCP Party Night

On Friday August 3rd 'Friends' held their annual summer party night. This year the venue was on 'home ground' at the Country Park. We also used the event to celebrate the Park achieving the Green Flag Award. The delicious and plentiful food was supplied by a local outside caterer and provided by Keith Laing, the Park Manager, in recognition of all the hard work the 'Friends' had put into the Park to achieve the "Green Flag" success.

It was a most enjoyable evening, the weather was perfect and those who wanted to sit outside were able to. We had an amusing quiz which kept people fairly quiet for a while and ended in farce when participants realised the quiz master (yours truly) was relying on them to provide the correct answers!!



Looking forward to the next social gathering.

*Dorothy*



# Rushcliffe Country Park

## ACTIVITY DAYS

Unless otherwise stated, all volunteer events are free and open to members of FORCP and non-members

### Work Days

The Friends Work Days will be held every Wednesday and Saturday from 3rd October to 19th December. New Volunteers and Members always welcome. See tasks below.

### FORCP Meetings

**FORCP Meeting** - 7th Nov 2007 @ 1-30pm RCP

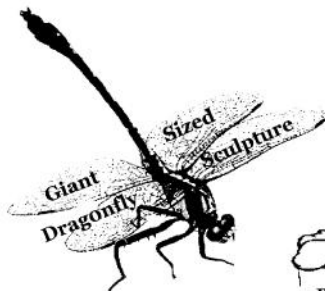
**FORCP Social - 9th Jan 2008** - Walk at Colwick Park followed by a meal at the Toby Carvery.

Meet 11am pub car park for the walk. Meal at 1pm

Please let Dorothy know asap if you are coming so that tables can be booked.

**FORCP Meeting** - 16th Jan 2008 @ 1-30pm RCP

### Tasks



This symbol denotes the activity is working towards the Notts Biodiversity Action Plan.

Meet at the Rangers' Office at 9.30 am.

Unless stated all events run from 10.00 am - 3.30 pm.

**Don't forget some lunch, sturdy boots and waterproofs.**

For more information contact the Rangers' Office **0115 921 5865.**

Produced by the Friends of Rushcliffe Country Park  
Registered Charity No 1079665



Supported by



An independent group associated with  
BTCV  
a registered charity